

PART A: LIMITATION CHECKLIST

1. General (Precaution)

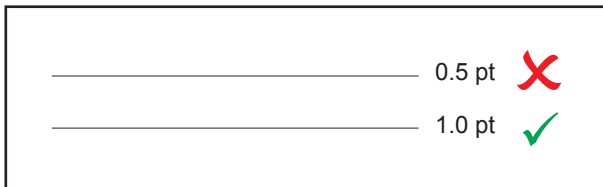
- Embossing is **NOT ALLOWED** to apply on gluing area.
- Embossing allow overlap with Silkscreen Spot UV, only when Silkscreen Spot UV artwork is same or smaller than Embossing artwork. Cross through is not allow.
- Vital elements (text, images, logo, etc) must be kept within the safe zone.
- Embossing is apply, at least 3mm from the creasing line.
- Embossing is **NOT ALLOWED** to do in JPEG (Must in vector).

2. Font

- Font size cannot less than 11 pt (based on Arial font type size) include wording inside small logo.
- Font size that is less than 11 pt (based on Arial font type size), the word(s) will be embossed as a whole instead of individual letter.
- Do not use font type with sharp end edge.

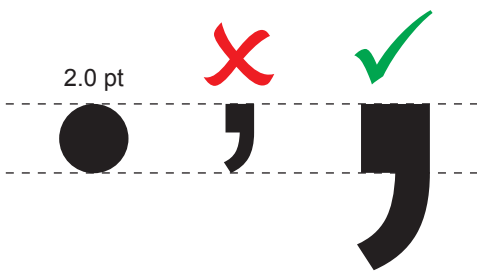
3. Line

- Line thickness must or more than 1.0 point.
- Gap between Embossing lines cannot less than 2.0mm.
- Outline of table is not allowed to apply (Miss-registration is more noticeable).



4. Dot

- Dot thickness cannot less than 2.0 point.
- Gap between Embossing dots cannot less than 1.0mm.
- Dot artwork may also including small symbol and character, example Comma (,), Full Stop(.), Colon (:), Semi Colon (;), Apostrophes ('), Quotation Marks ("), and etc.
- Symbol and character as mentioned above which create using Font (Arial font type), the font size cannot less than 2.0 pt.



5. Miss Registration

- Registration accuracy of Embossing is ± 0.5 mm.
- For products with Emboss finishing, Member may not reject order if Emboss defects affect only 2% or below of the printed quantity per order.

PART B: ARTWORK PREPARATION

1. Embossing artwork can be a vector graphic(vector), text, shape or solid color.
2. Embossing artwork must prepare in **100% PROCESS CYAN** color and **NO TONING** is allowed.
3. Emboss artwork must be accurately aligned with the printing artwork. Please double check to ensure the Emboss artwork position is at its Emboss artwork page.
4. Artwork is saved in latest format of Adobe Acrobat Document (.pdf)
5. PDF file must prepare for Embossing artwork:
Page 1: Overview
Page 2: Printable artwork only
Page 3: Artwork of image be Embossed
Page 4: Dieline

Example

Page 1: Overview



Page 2: Printable artwork only



Page 3: Artwork of image be Embossed



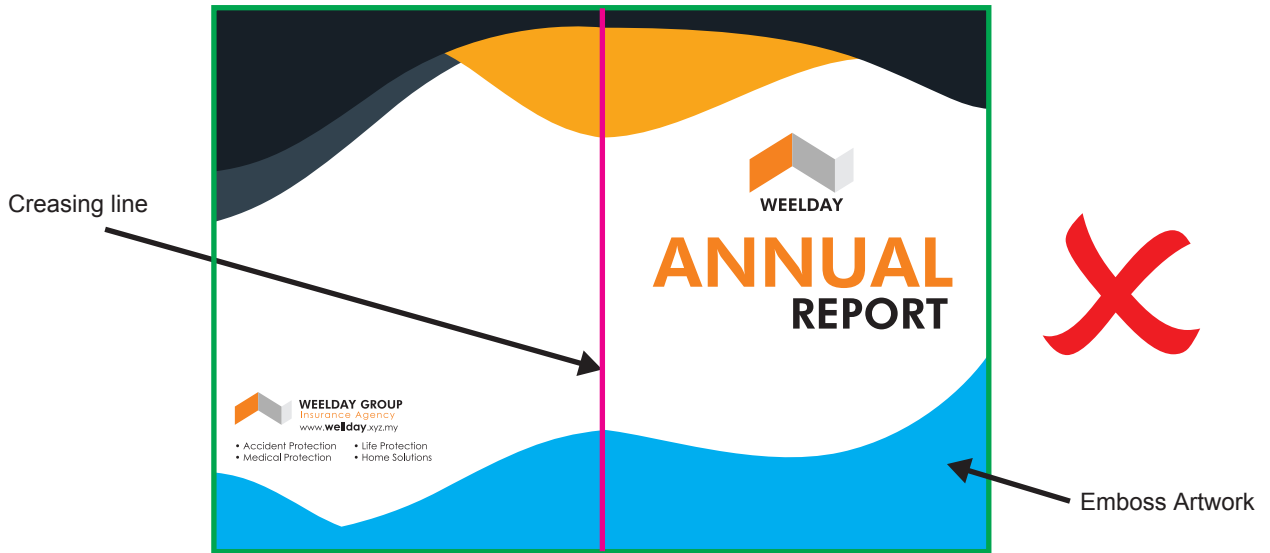
Page 4: Dieline



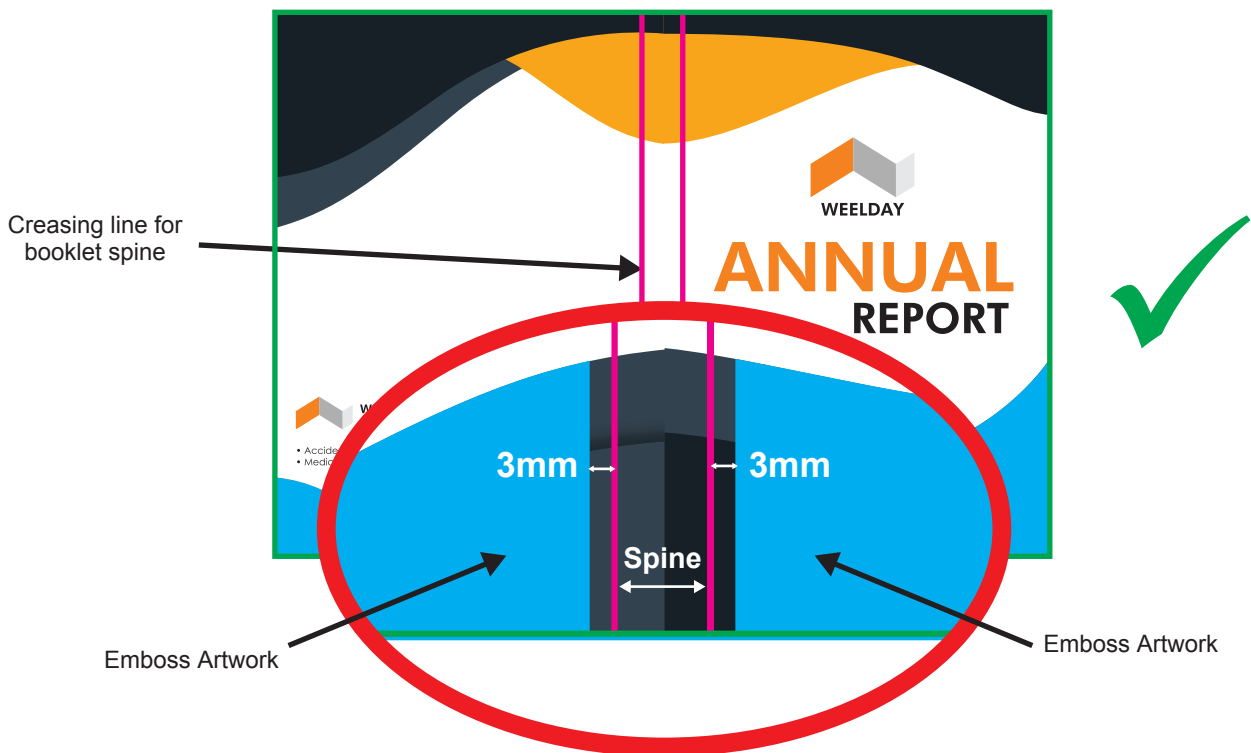
PART C: EXAMPLE OF ARTWORK LIMITATION

1. Embossing **not allowed** to pass through creasing line.

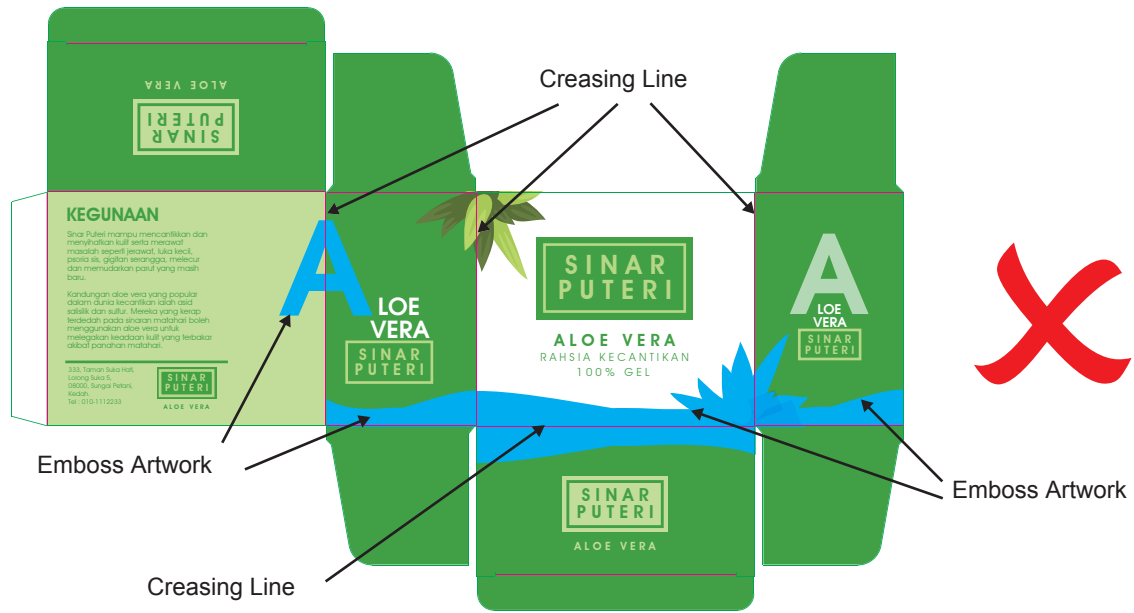
Example:



Embossing artwork on Booklet cover (Saddle Stitching)



Embossing artwork on Booklet cover (Perfect Binding - Soft Cover)



Embossing artwork on Packaging

Further Explanation for **not allowed** Emboss pass through creasing line.

- For creasing away from Embossing, no tendency of cracking will occur on the paper material.
- For creasing press against Embossing, paper material may cracked.

2. Emboss line limitation

- 2.1 Gap between Embossing lines cannot less than 2mm.
- 2.2 Embossing is apply, at least 3mm from the creasing line.

Example:

