

Step 01 - At least 10% of difference for tint/toning effect.

In order to make your tint/toning effect more obvious, make sure the value between colours are at least 10% of difference.

Example:



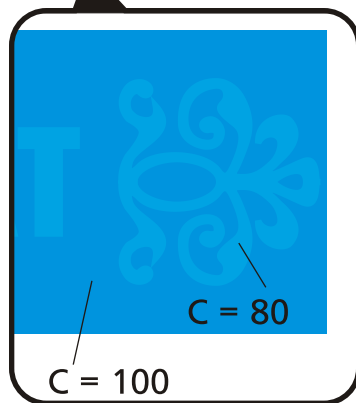
C = 80

C = 100 Background Colour

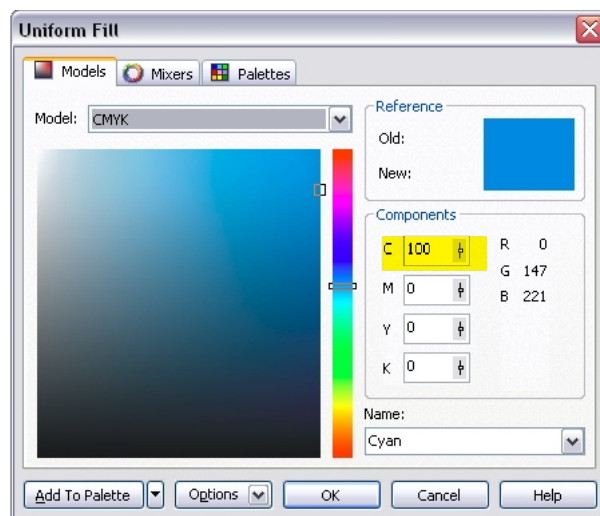


C = 95

C = 100



Adjust the background colour to **C=100**



Adjust tint/toning effect to **C=80**
(*At least 10% difference)

